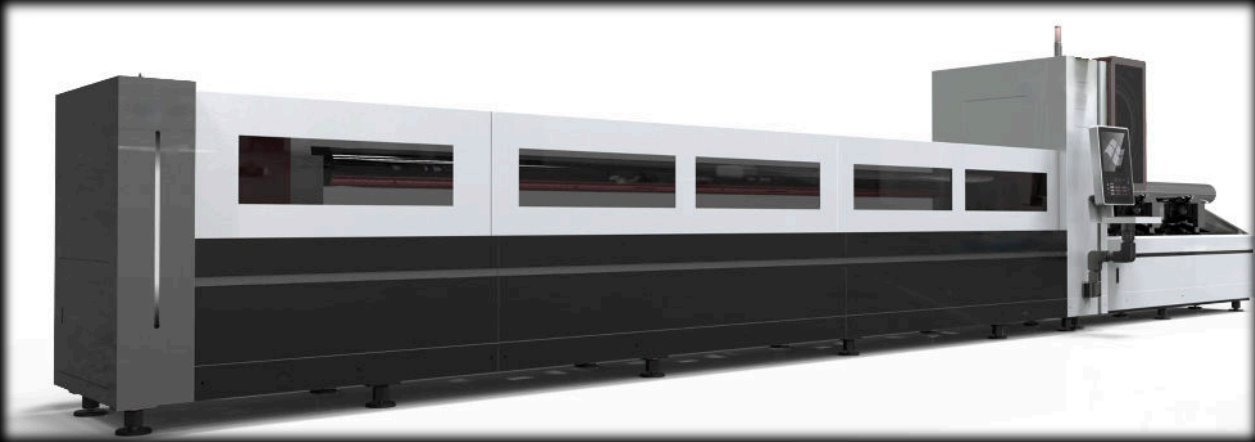
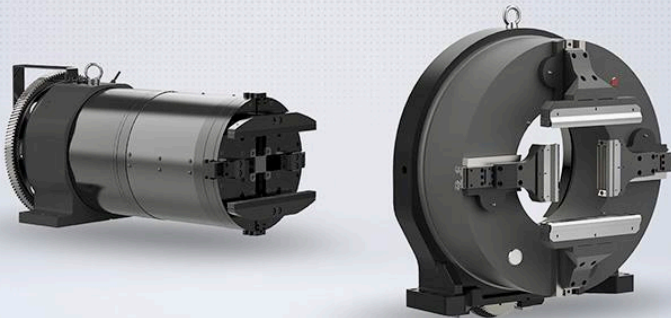


Movs Tube Cutter



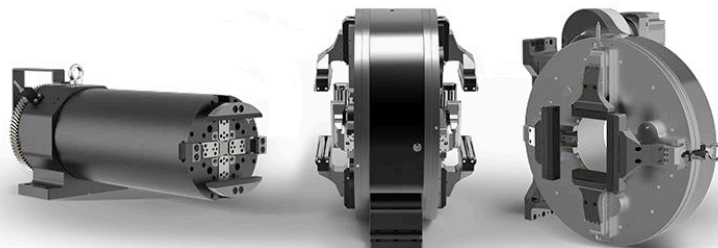
- Clamping diameter: 12 - 350 mm
- Pipe cutting options: 3 meters and 6 meters
- Cuts round, square, rectangular and elliptical pipes, I-beams, channel and angle steels
- The chuck has an automatic center adjustment function to achieve quick centering and clamping

PNEUMATIC CHUCK



OR

ELECTRIC CHUCK



Parameters

MODEL	SL60	SL90	SL120
Maximum rotating speed	100 r/min	100 r/min	100 r/min
Effective pipe length	6 500 mm	9 500 mm	12 500 mm
Pipe load-bearing	300 kg	300 kg	300 kg
Clamping range	Round: 20 - 240 mm Square: 20 - 240 mm I-beam: 100x50 - 220x110mm	Round: 20 - 240 mm Square: 20 - 240 mm I-beam: 100x50 - 220x110mm	Round: 20 - 240 mm Square: 20 - 240 mm I-beam: 100x50 - 220x110mm
Power range	1 000 - 12 000 W		

Samples

